



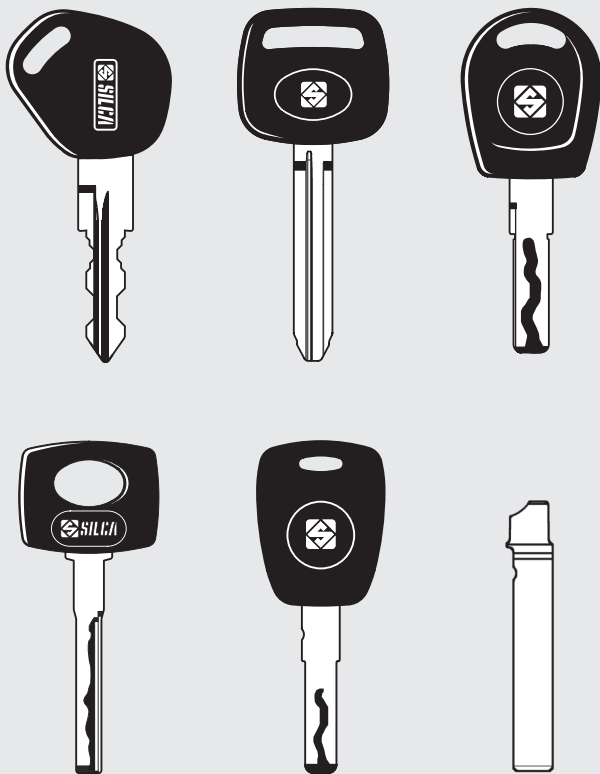
# EVOX



**Electronic key cutting machine for car keys designed to guarantee high versatility and maximum adaptability in any operating condition.**

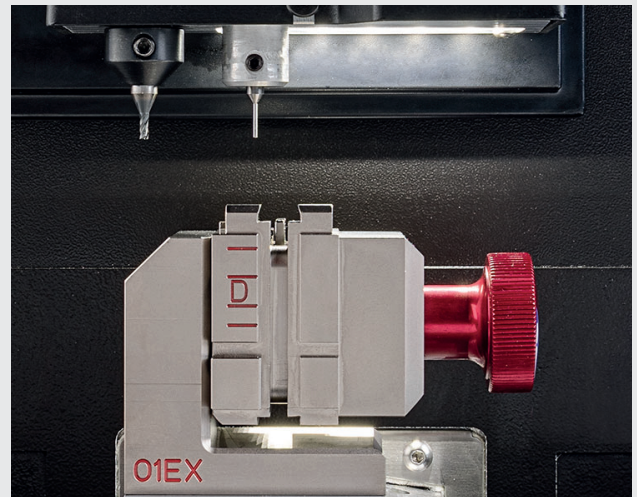
Fast, easy to use and easy to transport, it is the ideal solution for professionals looking for efficiency, practicality and reliability in a single tool.

**KEY CUTS**



**MAIN FEATURES**

- Four-sided clamp designed to hold almost all flat-profile car keys shown on the side.
- Universal cutter compatible with the main types of keys.
- Fixed tracer to ensure high precision and speed of operation.
- Integrated 7" industrial monitor.
- Designed and manufactured in Italy.



**TECHNICAL DATA**

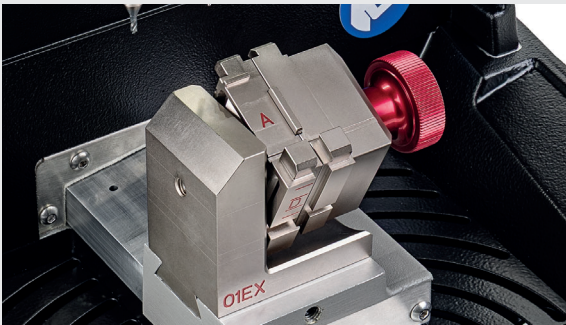
Power supply	Machine: 36V DC - 5.5 Amp - 130W ; Power supply: 90/264V AC - 50/60Hz
Cylindrical cutter	17L: in HSS Super Rapid Steel coated
Tool speed	Cylindrical cutter 12100 rpm
Movements	On 3 axes (with special bushes) driven by step motors (on rectified roller guides)
Clamp	01EX rotating, 4-sided universal for holding car key (for laser and double-sided flat cuts)
Carriage runs	X axis: 41 mm - 1.61" ; Y axis: 46 mm - 1.81" ; Z axis: 27 mm - 1.06"
Dimensions	Width: 270 mm - 10.63" (without button) ; 281 mm - 11.06" (with button) ; depth: 421 mm - 16.57" ; height: 308 mm - 12.13"
Mass	kg 13 - 28.66 lb



EvoX has been designed and manufactured in full compliance with CE mark directives.

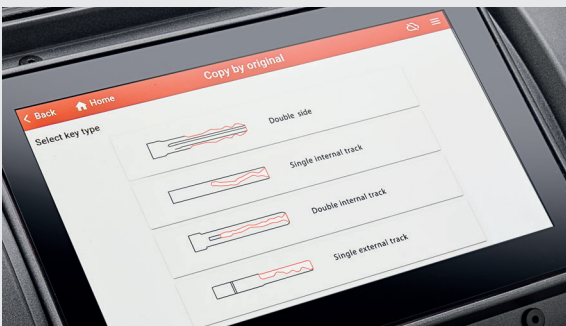
The illustrations and technical data regarding the products in the document are to be considered indicative. Silca reserves the right to alter products designs, dimensions or info to improve the products quality. The contents of this document are fully protected by Copyright and may not be copied or reproduced in any form, without written permission from Silca S.p.A. For any dispute the competent Court is that of Treviso, the applicable law is that of Italy.

## STRENGTHS



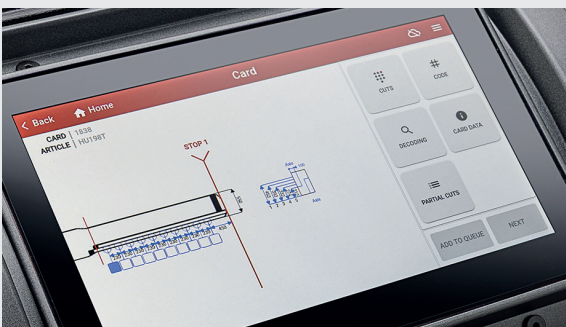
### FOUR-SIDED CLAMP

The four-sided rotating clamp allows both double-sided flat keys and laser keys to be clamped on their side and on their back. The software suggests the correct side of the clamp to use, while the new key alignment system ensures quick and accurate positioning.



### COPY FROM ORIGINAL

Precision and reliability thanks to the copy from original function. Designed for new vehicles or non-unique cutting cards.



### OPTIMISED KEY SEARCH

The software introduces a key search function for basic profiles with optimised and rationally organised results, speeding up the selection of the cutting card.



### MOBILE USE

The compact size and ergonomic handle ensure practical and safe portability, further facilitated by the low weight of only 13 kg.



CONNECT TO  
MYKEYS PRO

P1QA  
EVOX BROCHURE - EN



04/2026

**ITALY AND OTHER COUNTRIES  
SILCA S.p.A.**

Via Podgora, 20 (Z.I.)  
31029 VITTORIO VENETO (TV)  
Phone +39 0438 9136  
Fax +39 0438 913800  
E-mail: [silca@silca.it](mailto:silca@silca.it)  
Italy: [www.silca.it](http://www.silca.it)  
International Markets:  
[www.silca.biz](http://www.silca.biz)

**GERMANY  
SILCA GmbH**

Siemensstrasse, 33  
42551 VELBERT  
Phone: +49 2051 2710  
Fax +49 2051 271172  
E-mail: [info@silca.de](mailto:info@silca.de)  
[www.silca.de](http://www.silca.de)

**FRANCE  
SILCA S.A.S**

12, Rue de Rouen  
Z.I. Limay-Porcheville  
78440 PORCHEVILLE  
Phone: +33 1 30983500  
Fax +33 1 30983501  
E-mail: [info@silca.fr](mailto:info@silca.fr)  
[www.silca.fr](http://www.silca.fr)

**SPAIN  
SILCA KEY SYSTEMS S.A.**

Avinguda Conflent, 52 Nave 7  
08915 BADALONA  
Phone: +34 93 4981400  
E-mail: [silca@silca.es](mailto:silca@silca.es)  
[www.silca.es](http://www.silca.es)

**BENELUX  
H. CILLEKENS & B.V.**

Metaalweg, 4  
6045 JB ROERMOND  
Phone: +31 475 325147  
Fax +31 475 323640  
E-mail: [info@hcillekens.nl](mailto:info@hcillekens.nl)  
[www.hcillekens.nl](http://www.hcillekens.nl)

**UNITED KINGDOM  
SILCA LTD. & ADVANCED  
DIAGNOSTICS Ltd.**

Eastboro Fields  
Hemdale Business Park  
CV11 6GL Nuneaton  
United Kingdom  
[www.silca.co.uk](http://www.silca.co.uk)