



# NEWSLETTER

*This Month*

NEW SALTO Neoxx G3

CarLab | Premier Automotive Resource

NZ MLAA Trade Show Wrap-up



# ABUS Padlock Winners



The **ABUS 74 Series** safety padlock & the **ABUS 72 Series** are standout winners in business & industry. Both these series of padlocks have a well-earned reputation for winning jobs & are a standout in their class. With ABUS precision & reliability as well as keying, colour & shackle options, it's no wonder Locksmiths are winning more business offering these solutions to customers.

### ABUS 74 Series Safety Padlocks

Keyable options available



7440BLUKD

7440REDKD

7440ORGKD

- Special keyway (WB25L) - 6 pin
- Supplied in KD & or "O" bitted for keying alike
- Key retaining
- Solid aluminium core
- Nano-Protect™ shackle for superior corrosion resistance
- Body and shackle insulated against electric shock
- Automatic locking - shackle can be snap shut
- Supplied with notification stickers
- Available colours: Blue, Red, Orange, Black, Brown, Green, Grey, Purple, White, Yellow

### ABUS 72 Series Aluminium Padlocks

Rekeyable & master keyable,  
Multiple shackle materials and sizes available



7240RED

7240BLK

7240GRN

- Supplied keyed to differ
- High quality colour anodised 40 mm aluminium body
- Easy to rekey cylinder with ability to master key
- 27mm hardened steel shackle with Nano-Protect™ plating  
6.5mm shackle diameter
- Both genuine Abus (7240KB) and Silca alternative (AB3) keyblanks available
- Available colours: Black, Blue, Green, Orange, Purple, Red, Yellow and Titanium



For more information on the full range of ABUS padlocks please visit [lsc.co.nz](http://lsc.co.nz)



# PREMIER REFERENCE FOR AUTOMOTIVE LOCKSMITHS

**Streamline your automotive business with CarLab – the premier automotive locksmithing resource that is relevant for the New Zealand Market.**



Simple, clear, accurate information for the New Zealand market – developed in house by LSC’s own experts, using real vehicles, and with real information that’s accurate for local models including model names, date ranges and specific model series.

We’ve been working on a vast trove of new updates and information, and recently published updates add the 6K and 7K cloning capabilities for Hyundai and Kia.

Toyota vehicles have all been updated regarding the new H-Key All Keys Lost (AKL) solution.

**Recently, we’ve added and updated 100’s of vehicles:**

NEW MODELS	UPDATED INFO
Toyota x 14	Ford x 96
Hyundai x 16	Toyota x 117
Kia x 15	Hyundai x 90
Nissan x 5	Kia x 69
Ford x 1	Mazda x 55
Mazda x 8	Nissan x 66
GM Holden x 2	GM Holden x 73
Mitsubishi x 4	Mitsubishi x 62
Volkswagen x 8	Volkswagen x 59
Subaru x 8	Mercedes x 32
	Subaru x 29

## KEY / TRANSPONDER INFORMATION

<b>NEW</b> Key Type	Bladed
Blade Profile	TOY49
Silca Blank	STOY49TE
Transponder ID	46
<b>NEW</b> Transponder Configuration	Password Mode
<b>NEW</b> Silca Transponder	T14
<b>NEW</b> Silca Remote Key	SKIA8R28
<b>NEW</b> BDS Transponder	PCF7936
Transponder Type	Philips Hitag 2

## ADVANCED DIAGNOSTICS

Smart Pro Cable	ADC2000
-----------------	---------

## RW5 / SMART AERIAL PLUS

<b>NEW</b> Cloneable	Yes
<b>NEW</b> Cloning Transponder	GTI Pro
<b>NEW</b> Production Selection	Philips HITAG > 46 Password Mode
<b>NEW</b> Production Transponder	GTI Pro

## RW4 PLUS M BOX

<b>NEW</b> Cloneable	Yes
<b>NEW</b> Cloning Transponder	GTIW
<b>NEW</b> Production Selection	TRP > Philips Crypto 2 > 46 Password Mode
<b>NEW</b> Production Transponder	GTIW

*Subscribe Today, just one job that runs smoothly per month pays for it over and over.*

# ECP CAM LOCKS WITH KEY OVERRIDE



*With key override! (KA or KD)*

BORG mechanical digital Cam Lock with ECP (on door code change) with or without key override! Imagine no batteries to worry about & if someone forgets their code, just open with the override key, simple and easy.

- ✓ Easy to install on new or existing cabinets or cupboards
- ✓ Key override options KA or KD
- ✓ Perfect for lockers cabinets, key cabinets & cupboards



**Borg SC Cam Lock ECP**  
 KD BL1706SCECPKD  
 KA BL1706SCECPKA



**Borg MGPRO Cam Lock ECP**  
 KD BL1706MGPROECPKD  
 KA BL1706MGPROECPKA



**Borg Digital Cam Lock ECP**  
 BL1006SCECP



**Borg SC Code Change Cover Plate**  
 BLS101SC



**Borg MGPRO Code Change Cover Plate**  
 BLS101MGPRO

## QUALITY BRAVA EURO STYLE CYLINDERS DOMESTIC & COMMERCIAL

BRAVA has the most comprehensive range of Euro style cylinders for the professional Locksmith market. BRAVA Urban Euro cylinders LW4 & LW5 available in SC, CP, PB & Matt Black.

*All BRAVA Metro & Urban cylinders are easily rekeyable*



locking for life



**BRAVA Euro Single Cylinder with Turn**  
 31705PHBLKCT



**BRAVA Metro Euro Double Cylinder**  
 BRM905551CP



**BRAVA Urban Trilock Cylinder**  
 BRUTRILOCKLW5CP



**BRAVA 90mm Emergency Euro Double Cylinder**  
 31905PHESCKD

# PRODUCT SPOTLIGHT

visit [lsc.co.nz](http://lsc.co.nz) to see BRAVA Euro Style Cylinder full range!

## QUALITY BRAVA EURO STYLE CYLINDER



locking for life

BRAVA has the most comprehensive range of Euro style cylinders for the professional Locksmith market.

- Fixed cam
- LW4, 5 pin cylinder with turn
- Keyed to differ
- Overall length 90 mm including turn
- Rekeyable via 2 mm allen key
- Supplied with 2 keys
- Finished in anodised matt black

31705PHBLKCT



## ADI 802 SERIES LOCKING BARS

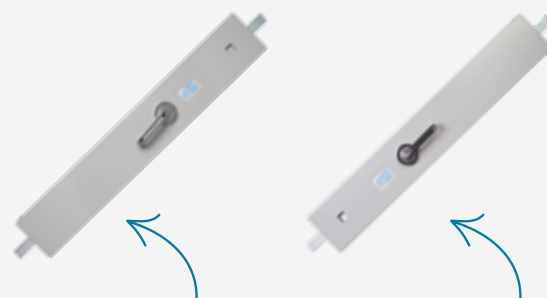
ADI locking bars are suitable for use in industrial and commercial buildings, institutions, clubs, schools, hospitals, hotels and similar buildings. High security multi-point locking devices that can be mounted horizontally to any solid core door.

**ADI Bar Locking LB802-1 with Internal Lever / External Cylinder LH**

ADILB8021LH

**ADI Bar Locking LB802-1 with Internal Lever / External Cylinder RH**

ADILB8021RH



**ADI**  
lockwise

lever inside with 201 cylinder outside suits left hand doors

lever inside with 201 cylinder outside suits right hand doors

## BORG DIGITAL LOCK 2107 DEADBOLT VERSION

Perfect for gates, internal/external doors, storage areas or applications where a non-latching mechanical lock is required.

- Fully mechanical Marine Grade Pro digital lock
- 60mm/70mm adjustable deadbolt latch supplied
- Holdback function, can be disarmed if required
- 316 grade stainless steel internal components
- New matt black Marine Grade Pro finish
- Fully reversible

BL2107MGPROECP **2107 Deadbolt Version**

BL2127MGPROECP **2127 Deadbolt BTB Version**



**easycodepro**

**Borglocks™**  
CONTROLLING ACCESS



## INTRODUCING SALTO NEOXX G3

# THE ULTIMATE ELECTRONIC PADLOCK SOLUTION

SALTO Systems has introduced the SALTO Neoxx G3 electronic padlock, the most advanced and versatile locking system on the market, which is suitable for a wide range of access control applications. With exceptional attention to detail, this electronic padlock offers unbeatable durability and reliability, ensuring that property and valuables are kept safe and secure at all times.



### HARDWARE

The SALTO Neoxx G3 padlock is made of hardened steel with a removable shackle model option, ensuring maximum durability. It is also IP66 - IP68 rated for water-resistance and IK08 impact-resistant, making it suitable for any kind of climatic environment, even those that are very extreme. The shackle is available in 8mm diameter and length options of 25mm, 30mm, 60mm, and 90mm. The padlock has been extensively tested, with up to 130,000 operations on a standard set of batteries (4 x LR1).



### CONNECTIVITY

The SALTO Neoxx G3 integrates RFID, Bluetooth LE, and NFC technologies to provide the ultimate keyless experience and the most advanced electronic locking system available. In addition, the Neoxx G3 electronic padlock features SALTO SVN data-on-card and BLUEnet wireless network capable core technologies onboard. The padlock can read, receive, and write information via a smart card or real-time communications over the air (OTA). It is compatible with the SALTO Space, SALTO KS and Homelok platforms.



### CREDENTIALS

The SALTO Neoxx G3 is fully compatible with a wide range of credentials, including card, wristband, fob, or phone (Apple and Android). Users on the SALTO KS system can even use Apple Wallet with an iPhone or Apple Watch.





“

*The SALTO Neoxx G3 is perfect for a wide range of access control applications and is particularly well-suited for those outdoor deployments that need the reporting and advanced technology that electronic access delivers, as well as a product with a tough exterior that can withstand extreme weather variations. You can extend electronic access to places never before thought possible – outside on the perimeter of property, in remote utility fields, and similar places.*

**Marc Handels, SALTO Systems CTIO.**

↖  
The SALTO Neoxx G3 joins its sister product, the SALTO Neoxx G4.

*The SALTO Neoxx G3 Padlock is available to order, and LSC can help customers with pre-sales support to system implementation.*

# ROSS SAFE LOCK SERIES



**ROSS standard safe lock with cover.** Suitable for floor, wall, drug, night, home and office safes/cabinets. Lock can be removed from the weld-on cover for servicing. Supplied Keyed to differ or keyed alike.

ROSS 600 Series AL 08952660

ROSS 600 Series RH 08952640

ROSS 600 Series AL keyed alike in 2'S 08952673

ROSS 600 Series AL keyed alike in 3'S 08952677

ROSS 600 Series AL keyed alike in 4'S 08952678



*visit [lsc.co.nz](http://lsc.co.nz) to see ROSS safe locks series complete range!*

**Features:**

- 6 pick resistant levers
- 1,000,000 possible combinations
- 2 x steel single bitted keys
- 10 keys sizes available from 30 to 180 mm

**Optional:**

- Steel keyhole inserts 4 sizes available
- Master keying
- Keystop & hardened plates
- Latching bolt

**Versions:**

- Dual control, safe-deposit, motel
- Electronic, time delay
- Narrow style, bolt on

## BORG LOCKS 25 YEARS

In late December 2022, Borg Locks celebrated their 25th year in the industry. A significant milestone in any business proving that their products have stood the test of time.



Over the years Borg Locks have been the industry standard, they continually produce high quality locks & also have changed the face of mechanical digital locks with their ECP "on door code change models". They listen to the market and continually improve their product ranges, like the new BL7701 Series released in October 2022. Stay tuned for more new & exciting products to come.

Borg Locks is a trusted brand for LSC, here's to another 25 years for Borg Locks!



**Borg Digital Lock Heavy Duty with ECP Keypad Lever and SFIC Key Override SS**

BL7701SSECP



**Borg Digital Lock Marine Grade with ECP Keypad Lever and SFIC Key Override Black**

BL7701MGPROECP



# AI COLOR+ MINI BULLET NETWORK CAMERA



Milesight

With an F1.0 super aperture and an advanced sensor, Milesight Color+ series can deliver colourful, high-resolution images in low-light conditions or at night-time. Enjoy excellent image performance for a wide range of monitoring scenarios such as outdoor areas, parking lots, retail environments, and more.

- **Full-colour image performance;** combined with the White LED, the Color+ camera delivers colourful images in the dark or at night for most monitoring scenarios. The warm light lamp helps to avoid glare for a better user experience.
- **F1.0 Super aperture;** large aperture (F1.0) allows more light to pass through to the sensor, giving a better low illuminance and higher definition image.
- **4K Video viewing experience;** user can enjoy up to 4K resolution within the Color+ series.
- **AI Video analytics;** intelligently filter objects to focus on human and vehicle detection in multiple events such as Region Entrance, Region Exiting, Loitering, Advanced Motion detection and more.
- **IP67 & IK10;** this series is designed for outdoor use in challenging conditions, and features a an IP67 weather proof rating and an IK10 vandal protection rating.



**Milesight 8MP AI Color+ Bullet Camera**  
MSC8164UPD



**Milesight 5MP AI Color+ Bullet Camera**  
MSC5364UPD

## WICOMM PRO

The new WiComm Pro is a high-end professional wireless intrusion system from RISCO Group, designed to meet the demands of installers and end-users alike. Released as an upgrade from the existing Agility™4 system, the WiComm Pro features a sleek new design that is 58% smaller than the Agility™4 panel.

*Fully wireless panel with video verification!*

### Fast & Simple Installation

WiComm Pro benefits from a smart mechanical design which means configuring the panel, adding the communications module and mounting it on the wall has never been easier so you can spend less time on site.

### Discreet Wireless Detectors

RISCO's range of Wireless Detectors, Camera PIRs, and Door/Window Contacts benefit from an innovative and clean design ideal for end users looking for a contemporary look and feel in their premises.

### Superior Performance

The WiComm Pro features an enhanced RF range that will help avoid signal problems on site. Installers can optimise and extend their WiComm Pro system with the use of a 2-way wireless repeater. Each panel can support up to 4 repeaters, which can in turn, each support up to 32 zones.

# NEWS AND EVENTS



## NEW ZEALAND MLAA MINI TRADE EXPO | MAY 19 & 20

The LSC NZ Team were delighted to exhibit at the MLAA Mini Trade Expo in late May at the Novotel in Ellerslie, Auckland. Our pop-up stand showcased the best products from our leading brands, and we successfully launched our full ecommerce website to our NZ customers.



The 2-day event drew in a big crowd as the last expo hosted in NZ was in 2018. The general feedback from visitors was positive and many that visited our stand got hands on with the new Silca Unocode F-Series machine or enjoyed a demonstration of our Milesight CCTV range.

With many visitors asking to make this an annual event we might see you again in Auckland in 2024!

# HAPPY CUSTOMERS



**LOCKLAB (AUCKLAND)**

LOCKLAB are no strangers to the Happy Customer section of the LSC Newsletter, featuring again this month and very happy with their latest purchase, a SILCA Futura Edge. Thank you for your business, Jono & Dan and for choosing SILCA, manufacturer of the world's best key blanks and key cutting machinery.



**FAR NORTH MOBILE LOCKS (KAITAIA)**

Kylie & Aidan from Far North Mobile Locks with their well-appointed van.



**THE LOCKSMITHS (PUKEKOHE)**

Erica Sinton from The Locksmiths with LSC Account Manager Craig Andrewartha and her new Silca F800 key machine. Happy Key Cutting Erica.



**J MARTYN OAMARU (OAMARU)**

Geoff Martyn of J Martyn Oamaru with his SMART Aerial+. Geoff is now able to clone more of the transponder keys that come in.



**BEGG CENTRAL (CROMWELL)**

Begg Central have a brand-new purpose-built building in Cromwell.



# Silca GTI Pro Transponders Last Longer



✓ **Superior Functionally**  
The Silca GTI Pro transponder is tested to hold cloned data for 35 years.

✓ **Superior Mechanically**  
A GTI transponder, inside a Silca TE key, is proven to continue working perfectly even after being dropped 500 times.

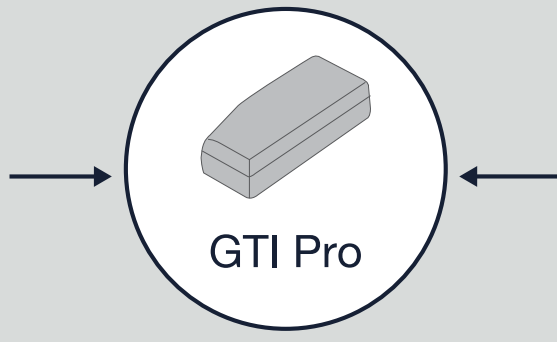
✓ **10 year Guarantee**  
Only Silca GTI Pro transponders come with a 10 year guarantee.

✓ **Wide technology coverage**

**GTI-W**  
Multi Transponder

**T80+**  
DST 80

**ID8C**  
Temic Crypto Mazda



**T49C**  
Honda "G"

**T128C**  
Toyota H

**T5**  
Temic ID (11,12,13,33)

## TERMS & CONDITIONS

Product features and pricing in this newsletter are subject to change without notice. Special promotional prices advertised here are for the month the newsletter has been published. However, some offers may commence on or extend beyond the promotional period. Most products have been photographed in-house and are identical to what you will receive. Information presented in this newsletter has been checked and is believed to be correct at the time of printing, however, errors and omissions may occur. LSC can not guarantee prices, specifications, or features of products that may change after printing.